

Springfield Garden Village Plans (2008/4452)

Reduced number of units

1200 units are now proposed - a reduction on the 1400 originally planned.

Access from Burntwood Lane

This will be the main access to the estate

Open spaces

The golf course will be removed and the land incorporated into a new landscaped park for residents and hospital patients. No green spaces will be lost to the development.

Refurbished buildings

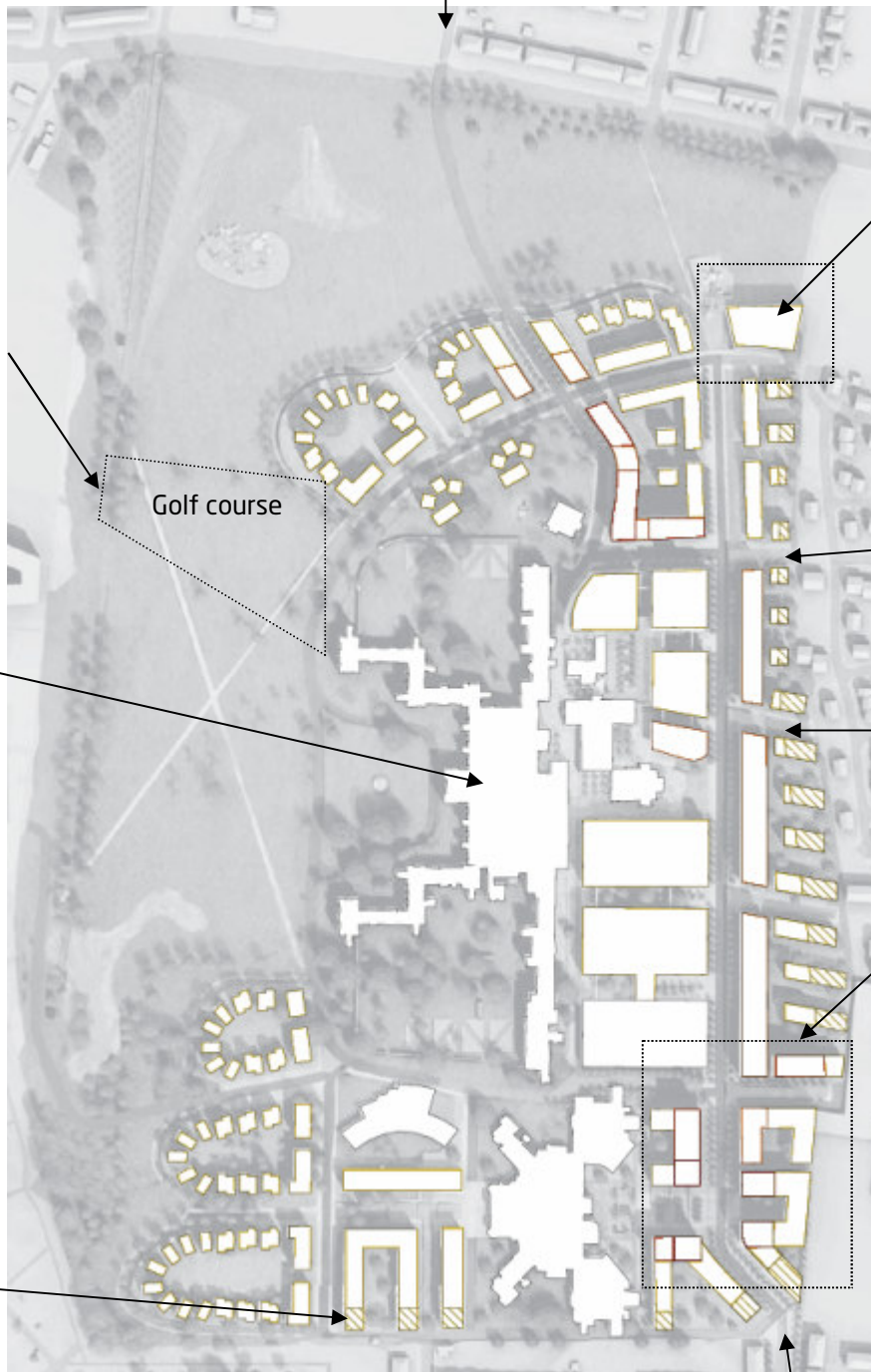
The old hospital buildings will be refurbished and turned into housing.

Parking

A maximum of 1176 car parking spaces have been proposed for the site.

Low-rise housing

Buildings on the edge of the site will be the same height as adjacent existing buildings.



New school

There is the potential for a new primary school to be built, with playing fields and access to the parks in the estate.

Pedestrian Access to College Gardens

The plans consider allowing pedestrian and cycle access to the estate through College Gardens, which is of serious concern to local residents.

5-8 story buildings

The Glenburnie Road corner of the site will be the site for 7 new buildings ranging from 5-8 stories. This will be the most densely populated part of the development.

Vehicles will also be able to access the estate from Glenburnie Road

Need to know more?

This is just a quick overview of the plans and the features that most people are concerned about.

I am working on a more comprehensive newsletter which will be sent out in the New Year.

More information can be found on Wandsworth Council Planning Service's website at: www.wandsworth.gov.uk/planning

5 WAYS to contact Sadiq

write
to Sadiq Khan MP
at House of commons
London SW1A 0AA
or 58 Trinity Road
London Sw17 7RH

phone
Sadiq's office on
020 7217 6967

fax
Sadiq's office on
020 7217 6477

email
Sadiqkhan@parliament.uk

online
www.sadiqkhan.org.uk